

The logo for the National Kitchen + Bath Association (NKBA) is displayed in a large, bold, sans-serif font. The letters 'N', 'K', and 'A' are white, while the 'B' is a deep purple. The logo is set against a black rectangular background.

NKBA

INNOVATION+
INSPIRATION

THE OFFICIAL PUBLICATION OF THE NATIONAL KITCHEN + BATH ASSOCIATION

A photograph of a modern bathroom. In the foreground, a wooden vanity with a thick, natural wood countertop holds a white rectangular sink with a chrome faucet. To the right, a white clawfoot bathtub is partially visible. The wall behind the tub is covered in a blue and white patterned wallpaper. A window with white blinds is visible above the tub. The floor is made of light-colored wood.

VICTORIAN REDEFINED

THIRTY UNDER 30: RISING STARS OF THE INDUSTRY
WHERE ARE THEY NOW? PAST THIRTY UNDER 30S
RANGE HOODS / TOILETS

NOVEMBER + DECEMBER 2018 / NKBA.ORG

TRUE TO TRADITION

This Chicago-area kitchen marries modern convenience with historical character

BY AMANDA HERMANS



In her hometown of Oak Park, Ill., designer Pamela Polvere, CKD, often faces the challenge of updating historical houses with modern amenities that blend with the home's original character. This kitchen project was no different.

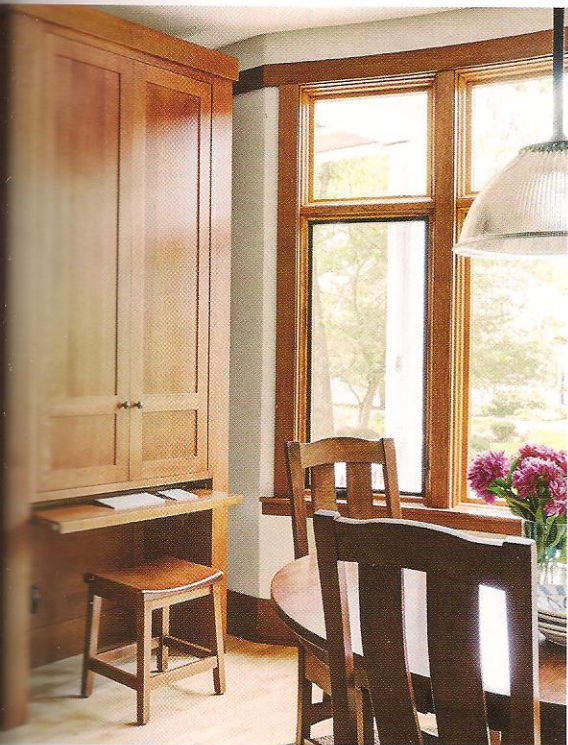
Polvere's eponymous firm, Pamela Polvere Designs, had clients who wanted to stay true to their home's traditional style while creating a kitchen ideal for entertaining guests. Rather than going with the trend for contemporary, painted cabinets, they opted for quartersawn wood that coordinates with the home's other finishes. The designer specified leaded glass in some cabinet doors to match old windows elsewhere in the house.

Polvere created space for entertaining by converting a cluttered desk area into a wet bar, complete with a sink, dishwasher drawer, and coffee machine. The coffee machine presented one of the greatest installation challenges: To feign a counter-depth appearance, the 21-inch-deep unit needed to be pushed back into a space behind the wall so only 13 inches protrude onto the counter. The result is a flush look with plenty of counter space in front.

The designer differentiated the wet bar from the main kitchen with a gray tile inset in the room's hardwood floor. In addition to setting the space apart, "if they spill drinks or wine there, it's easy to maintain," she says.

Across from the wet bar area, the designer placed a broad, custom-made range hood in a light zinc finish, providing a visual break from the rich wood cabinetry and oil-rubbed bronze finishes elsewhere in the room. "I think that's a really nice focal point," Polvere says. On the other side of the room, a small zinc countertop between two pantry units provides its visual mirror.

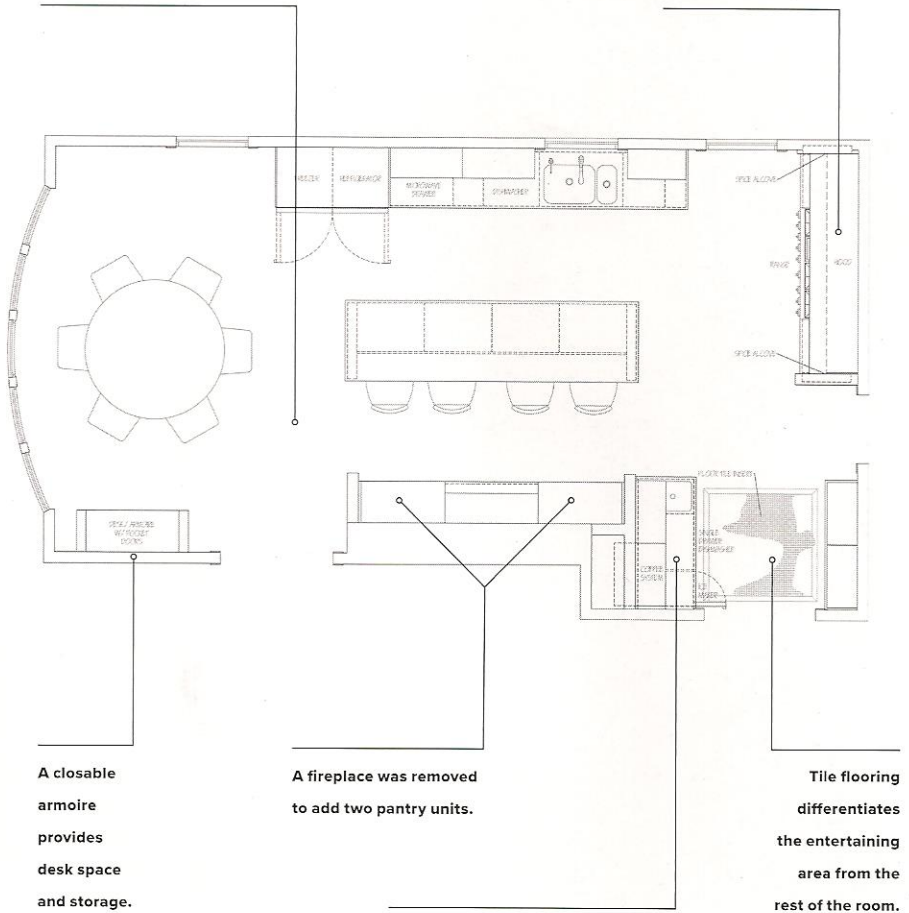
Polvere had the original brass lighting fixtures replated in oil-rubbed bronze for the new space. Replacing the original desk area is an armoire with pocket doors that close to hide the clients' computers and files. Above it all, a band of wood trim that matches similar trim throughout the home runs around the top of the room,



PHOTOS: MICHAEL ALAN KASKEL

The island accommodates four stools, which can be tucked neatly under the countertop.

The range hood was expanded to become the room's focal point.



A closable armoire provides desk space and storage.

A fireplace was removed to add two pantry units.

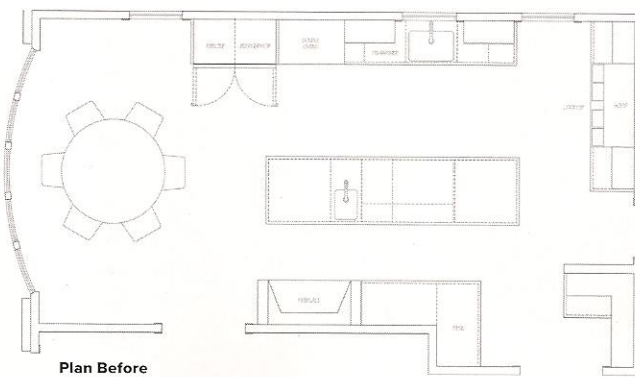
Tile flooring differentiates the entertaining area from the rest of the room.

The former desk area was replaced with a wet bar, complete with sink, coffee maker, and dishwasher drawer.

pulling all of the elements together. "It was extremely challenging to get that height right," Polvere says. But her efforts paid off: The final product is a functional space boasting both modern comforts and traditional flare. ■

RESOURCES

- Cabinets:** Plato Woodwork
- Cabinet hardware:** Merit
- Coffee maker:** Miele
- Countertop:** Ultimate Stone
- Dishwasher drawer/ice maker:** Electrolux
- Dishwasher/range:** Thermador
- Range Hood:** Custom Metal Home
- Lighting fixtures:** Brass Light Gallery
- Sinks:** Kohler



Plan Before